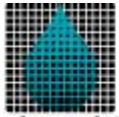


# VM1 SERIES: Pressurized Valve Mount System



**The Fluid Life Corporation**  
...because what happens on the inside really counts.

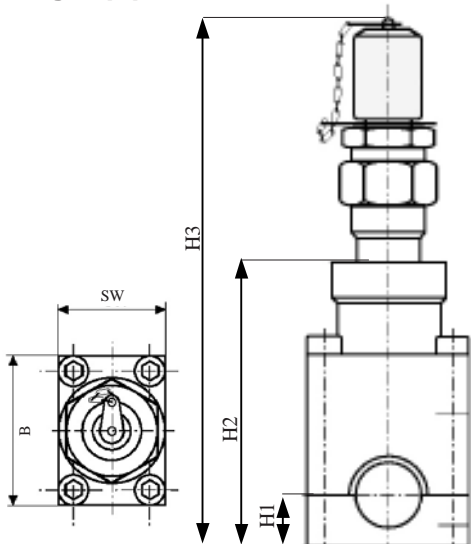
**Head Office & Edmonton Laboratory**  
9321-48 St. Edmonton, Alberta T6B 2R4  
Ph 780-462-2400 Fax 780-462-2420  
Toll Free 1-877-962-2400

**Ontario Laboratory**  
95 Copernicus Blvd. Brantford, ON N3P 2N4  
Ph 519-720-9700 Fax 519-720-9705  
www.fluidlife.com



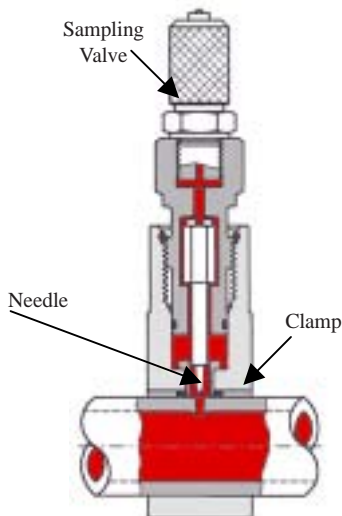
•Quick •Convenient •Safe

- Add oil sampling and pressure measuring connections without interrupting plant operation.
- After installation connection can stand up to 9000psi (620 bar).
- Install on tubing and pipe with pressure. **Do not use in air or gas pipes.**
- No special tools required.
- System is fully sealed off, no external contamination.
- No cutting open pipes or special adapters required.
- Installation in only a few minutes.



Part #	H1	H2	H3	B	SW
VM1-38	0.59" (15mm)	2.71" (69mm)	5.04" (128mm)	1.58" (40mm)	1.18" (30mm)
VM1-12	0.59" (15mm)	2.76" (70mm)	5.08" (129mm)	1.58" (40mm)	1.18" (30mm)
VM1-58	0.59" (15mm)	2.83" (72mm)	5.16" (131mm)	1.58" (40mm)	1.18" (30mm)
VM1-34	0.79" (20mm)	3.09" (78.5mm)	5.41" (137.5mm)	1.97" (50mm)	1.18" (30mm)
VM1-1	0.79" (20mm)	3.23" (82mm)	5.55" (141mm)	1.97" (50mm)	1.18" (30mm)
VM1-114	1.18" (30mm)	3.74" (95mm)	6.06" (154mm)	2.56" (65mm)	1.18" (30mm)
VM1-112	1.18" (30mm)	3.86" (98mm)	6.18" (157mm)	2.56" (65mm)	1.18" (30mm)

Part #	H1	H2	H3	B	SW
VM1-10LS	0.59" (15mm)	2.72" (69mm)	5.04" (128mm)	1.58" (40mm)	1.18" (30mm)
VM1-12LS	0.59" (15mm)	2.76" (70mm)	5.08" (129mm)	1.58" (40mm)	1.18" (30mm)
VM1-14S	0.59" (15mm)	2.8" (71mm)	5.12" (130mm)	1.58" (40mm)	1.18" (30mm)
VM1-15L	0.59" (15mm)	2.82" (71.5mm)	5.14" (130.5mm)	1.58" (40mm)	1.18" (30mm)
VM1-16S	0.59" (15mm)	2.84" (72mm)	5.16" (131mm)	1.58" (40mm)	1.18" (30mm)
VM1-18L	0.59" (15mm)	2.87" (73mm)	5.2" (132mm)	1.58" (40mm)	1.18" (30mm)
VM1-20S	0.79" (20mm)	2.91" (74mm)	5.24" (133mm)	1.97" (50mm)	1.18" (30mm)
VM1-22L	0.79" (20mm)	2.95" (75mm)	5.27" (134mm)	1.97" (50mm)	1.18" (30mm)
VM1-25S	0.79" (20mm)	3" (76.5mm)	5.33" (135.5mm)	1.97" (50mm)	1.18" (30mm)
VM1-28L	0.79" (20mm)	3.07" (78mm)	5.39" (137mm)	1.97" (50mm)	1.18" (30mm)
VM1-30S	1.18" (30mm)	3.11" (79mm)	5.83" (148mm)	2.56" (65mm)	1.18" (30mm)
VM1-35L	1.18" (30mm)	3.21" (81.5mm)	5.53" (140.5mm)	2.56" (65mm)	1.18" (30mm)
VM1-38S	1.18" (30mm)	3.27" (83mm)	5.59" (142mm)	2.56" (65mm)	1.18" (30mm)
VM1-42L	1.18" (30mm)	3.35" (85mm)	5.67" (144mm)	2.56" (65mm)	1.18" (30mm)



## Pipe Requirements

Seamless drawn steel pipes made out of ST 35.4 material or pretreated basic material ST 37.4 according to DIN 1630. Condition when supplied NBA (normalising, bright annealed) with outer pipe diameter tolerances according to DIN 2391, maximum hardness: HRB 75. Construction dimensions of the Valve Mount System are adapted to the pipes and tolerances according to DIN 2391.

## Materials

Component	Material
Housing	Steel
Sealing Shell	Steel
Seal	Viton™
Measuring Needle	Steel



- Pipe should be in good condition and have the proper diameter. **Do not use in air or gas pipes.**
- Pipe location should not add extra stress or tension on the valve mount.
- Remove paint and clean pipe so that the pipe is smooth, clean and dry.



- Clamp the valve mount to the pipe



- Screw down clamp bolts



- Using an open jawed wrench (without extension), screw in head joint in clockwise direction as far as it will go.



- Using an open jawed wrench (without extension), screw back head joint in counter-clockwise direction.



- The system is ready for use.



*The*  
**Fluid Life**  
*Corporation*