

VM2 SERIES: Pressureless Valve Mount System



The Fluid Life Corporation
...because what happens on the inside really counts.

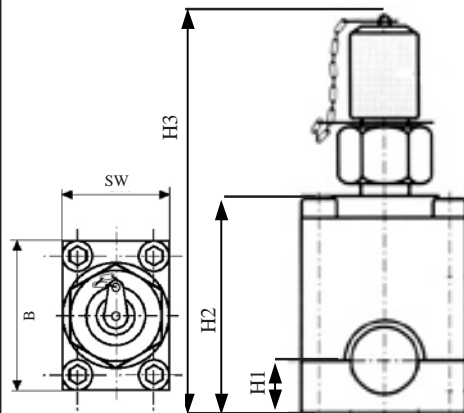
Head Office & Edmonton Laboratory
9321-48 St. Edmonton, Alberta T6B 2R4
Ph 780-462-2400 Fax 780-462-2420
Toll Free 1-877-962-2400

Ontario Laboratory
95 Copernicus Blvd. Brantford, ON N3P 2N4
Ph 519-720-9700 Fax 519-720-9705
www.fluidlife.com



•Quick •Convenient •Safe

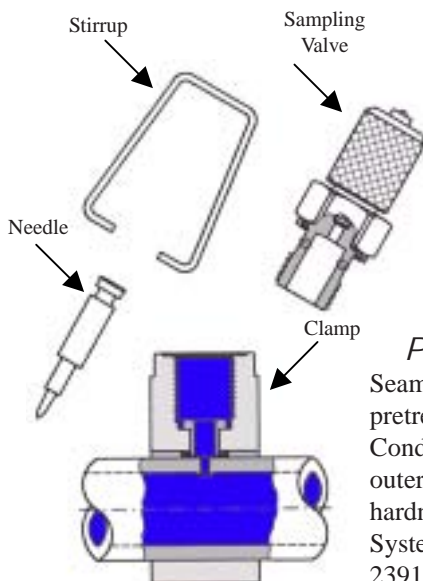
- Add oil sampling and pressure measuring connections easily and safely.
- Install on tubing and pipe with no pressure. **Do not use in air or gas pipes.**
- After installation, connection can stand up to 9000psi (620 bar)
- No special tools required.
- System is fully sealed off, no external contamination.
- No cutting open pipes or special adapters required.
- Installation in only a few minutes.



Part #	H1	H2	H3	B	SW
VM2-38	0.59" (15mm)	1.93" (49mm)	3.7" (94mm)	1.58" (40mm)	1.18" (30mm)
VM2-12	0.59" (15mm)	1.97" (50mm)	3.74" (95mm)	1.58" (40mm)	1.18" (30mm)
VM2-58	0.59" (15mm)	2.05" (52mm)	3.82" (97mm)	1.58" (40mm)	1.18" (30mm)
VM2-34	0.79" (20mm)	2.3" (58.5mm)	4.08" (103.5mm)	1.97" (50mm)	1.18" (30mm)
VM2-1	0.79" (20mm)	2.44" (62mm)	4.21" (107mm)	1.97" (50mm)	1.18" (30mm)
VM2-114	1.18" (30mm)	2.95" (75mm)	4.72" (120mm)	2.56" (65mm)	1.18" (30mm)
VM2-112	1.18" (30mm)	3.07" (78mm)	4.84" (123mm)	2.56" (65mm)	1.18" (30mm)

Above parts are for tubing only. For Schedule 80 & 160 pipe add P (i.e. VMP2-1)

Part #	H1	H2	H3	B	SW
VM2-10LS	0.59" (15mm)	1.93" (49mm)	3.7" (94mm)	1.58" (40mm)	1.18" (30mm)
VM2-12LS	0.59" (15mm)	1.97" (50mm)	3.74" (95mm)	1.58" (40mm)	1.18" (30mm)
VM2-14S	0.59" (15mm)	2" (51mm)	3.78" (96mm)	1.58" (40mm)	1.18" (30mm)
VM2-15L	0.59" (15mm)	2.03" (51.5mm)	3.8" (96.5mm)	1.58" (40mm)	1.18" (30mm)
VM2-16S	0.59" (15mm)	2.05" (52mm)	3.82" (97mm)	1.58" (40mm)	1.18" (30mm)
VM2-18L	0.59" (15mm)	2.09" (53mm)	3.86" (98mm)	1.58" (40mm)	1.18" (30mm)
VM2-20S	0.79" (20mm)	2.32" (59mm)	4.09" (104mm)	1.97" (50mm)	1.18" (30mm)
VM2-22L	0.79" (20mm)	2.36" (60mm)	4.13" (105mm)	1.97" (50mm)	1.18" (30mm)
VM2-25S	0.79" (20mm)	2.42" (61.5mm)	4.19" (106.5mm)	1.97" (50mm)	1.18" (30mm)
VM2-28L	0.79" (20mm)	2.48" (63mm)	4.25" (108mm)	1.97" (50mm)	1.18" (30mm)
VM2-30S	1.18" (30mm)	2.91" (74mm)	4.69" (119mm)	2.56" (65mm)	1.18" (30mm)
VM2-35L	1.18" (30mm)	3.01" (76.5mm)	4.78" (121.5mm)	2.56" (65mm)	1.18" (30mm)
VM2-38S	1.18" (30mm)	3.07" (78mm)	4.84" (123mm)	2.56" (65mm)	1.18" (30mm)
VM2-42L	1.18" (30mm)	3.15" (80mm)	4.92" (125mm)	2.56" (65mm)	1.18" (30mm)



Pipe Requirements

Seamless drawn steel pipes made out of ST 35.4 material or pretreated basic material ST 37.4 according to DIN 1630. Condition when supplied NBA normalising, bright annealed) with outer pipe diameter tolerances according to DIN 2391, maximum hardness: HRB 75. Construction dimensions of the Valve Mount System are adapted to the pipes and tolerances according to DIN 2391.

Materials

Component	Material
Housing	Steel
Sealing Shell	Steel
Seal	Viton™
Measuring Needle	Steel



- Check to see that the line is pressureless and the machine is shutoff and locked out.
- Pipe should be in good condition and have the proper diameter. **Do not use in air or gas pipes.**
- Pipe location should not add extra stress or tension on the valve mount.
- Remove paint and clean pipe so that the pipe is smooth, clean and dry.



- Clamp the valve mount to the pipe



- Screw down clamp bolts



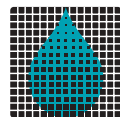
- Using an open jawed wrench (without extension), screw in head joint in clockwise direction as far as it will go.



- Screw out the sampling valve and remove the spring plug, needle and pressure disk.



- The sampling valve is screwed back in and the system is ready for use.



The
Fluid Life
Corporation