

# CheckPoint

## Lube Management and Oil Analysis Together

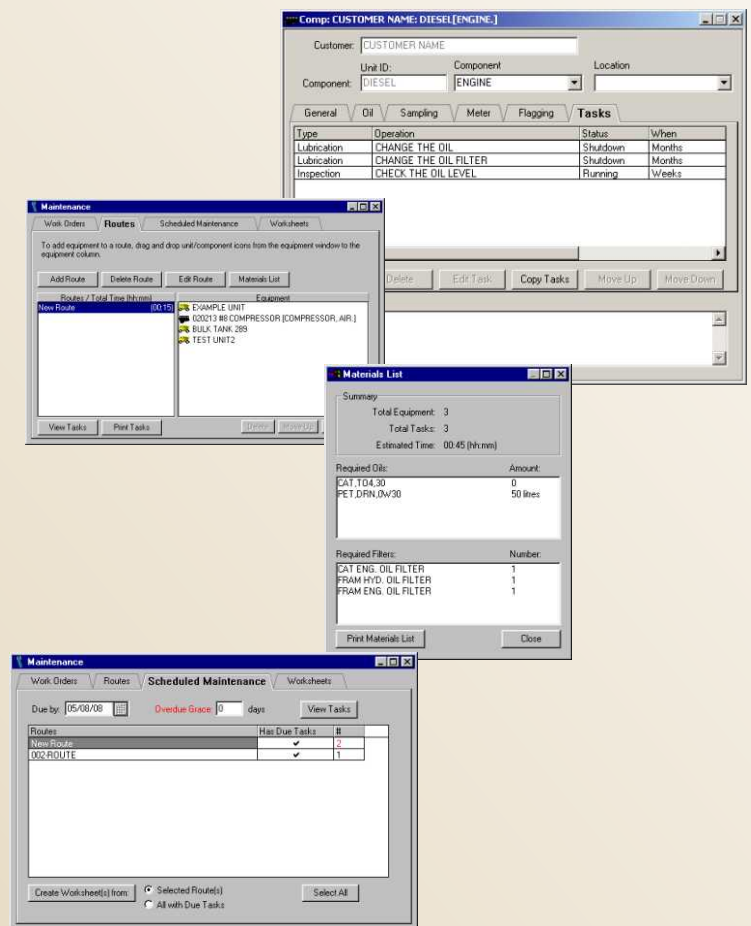


Add the next piece of the puzzle by managing your lubrication and maintenance in the same best of class program as your oil analysis. With CheckPoint and WinRoast, you get the best of both worlds.

The CheckPoint module adds lube task, maintenance task, route, and workorder scheduling, reporting, tracking and recording right in WinRoast. Now you only have to manage one equipment and lube database. Combined with ceRoast on handhelds you can have a completely paperless system.

## CheckPoint Features:

- Assign and schedule lubrication, inspection, sampling and maintenance tasks for your equipment.
- Define routes by simply dragging and dropping equipment on a route and easily reorder a route.
- Define periodic services that can be applied to any unit.
- Shows you the time required to complete a route as you build it.
- Filter which types of tasks you wish performed on a route.
- See the types and quantities of lubes and filters needed to complete a route.
- Quickly find which routes are due and create worksheets to get them performed.
- Logs each task and records system temperatures, pressures, who performed the task and more.
- View and graph your complete lube and maintenance tasks with your oil analysis.
- Use WinRoast's advanced reporting to create and run custom reports, KPI's, and summaries from your lube and maintenance management data.



The  
**Fluid Life**  
Corporation

9321 - 48 Street  
Edmonton, Alberta T6B 2R4  
Phone: (780) 462-2400  
Fax: (780) 462-2420  
Toll Free: 1-877-962-2400

95 Copernicus Boulevard  
Brantford, ON N3P 1N4  
Phone: (519) 720-9700  
Fax: (519) 720-9705

Copyright © 2003 Fluid Life. All Rights Reserved.  
ROAST, WinRoast and ROAST for Windows are  
trademarks of The Fluid Life Corporation.  
Windows and Windows NT are trademarks of  
Microsoft Corporation.

...because what happens on the inside really counts.

Visit us online at: [www.fluidlife.com](http://www.fluidlife.com)

# ceRoast with CheckPoint

WinRoast with CheckPoint



When you combine WinRoast with CheckPoint and ceRoast you get a complete paperless management system for your oil samples, lube routes, and maintenance tasks. You can have as many handhelds running ceRoast as needed for your staff or operations.

You can also take advantage of ceRoast's no fault equipment, bulk tank and transfer pail identification using rugged RFID tags to ensure the right tasks are performed and correct lubes used for each piece of equipment.

## ceRoast with CheckPoint Features:

### Paperless Lube Management

ceRoast records all lube and maintenance tasks electronically. Everyone can quickly see which tasks need to be done to which equipment and can record the completion and information about those tasks. No log books and no typing in data later.

### Flexible

ceRoast allows you to optionally RFID tag your equipment, bulk tanks, drums and oil transfer containers for accurate tracking of oil from supply to use.

### Lube/Maintenance Route Support

ceRoast supports your routes. Simply select a route and ceRoast will show you which equipment and tasks you have yet to perform and each one you have done. Don't miss any more tasks.

### Ad-hoc tasks

ceRoast also supports recording of ad-hoc tasks that get done outside of scheduled routes so you don't miss recording important *boots on the ground* maintenance.

### No Fault Identification

Equipment and lubricants are always correctly identified.

### Rugged Tags Synchronizes with

With tough RFID tags encased in plastic ceRoast can still read tags covered in black diesel oil, dirt, dust, almost anything you can throw at it. Tags can be directly mounted to sample point fittings, tanks, drums, and containers right on the actual equipment, or nearby to what ever's handy. No flat, always clean surfaces are needed unlike bar codes.

### CheckPoint

ceRoast will automatically synchronize all updates with CheckPoint and WinRoast allowing you to see and report on which tasks, equipment and areas are being done and automatically reschedules missed tasks. Plus you can now see all the lube and maintenance tasks that are complete with your oil analysis so you know what's been done and can schedule new tasks based on your results.



## Want to find out more about these products from Fluid Life?

- Checkpoint
- Checkpoint Expert
- CeRoast / Handhelds

Give us a call toll free at 1-877-962-2400, or visit us online at [www.fluidlife.com](http://www.fluidlife.com). We'll be more than happy to arrange a personal demonstration.

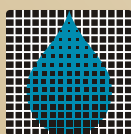
### Requirements:

#### WinRoast & CheckPoint

- Pentium 3 or better.
- Windows 2000, XP or Vista.
- 500 Mb Ram.
- 1 Gig. Free Hard Disk Space.
- Internet connection.

#### ceRoast

- Windows CE 4.2, CE .NET, Mobile 2003, Pocket PC 2003
- 1 MB Memory
- Type II Compact Flash Slot, or built-in RFID reader



The  
**Fluid Life**  
Corporation

9321 - 48 Street  
Edmonton, Alberta T6B 2R4  
Phone: (780) 462-2400  
Fax: (780) 462-2420  
Toll Free: 1-877-962-2400

95 Copernicus Boulevard  
Brantford, ON N3P 1N4  
Phone: (519) 720-9700  
Fax: (519) 720-9705

Copyright © 2003 Fluid Life. All Rights Reserved.  
ROAST, WinRoast and ROAST for Windows are  
trademarks of The Fluid Life Corporation.  
Windows and Windows NT are trademarks of  
Microsoft Corporation.

...because what happens on the inside really counts.

Visit us online at: [www.fluidlife.com](http://www.fluidlife.com)