

ISO Particle Count

ISO Particle Count

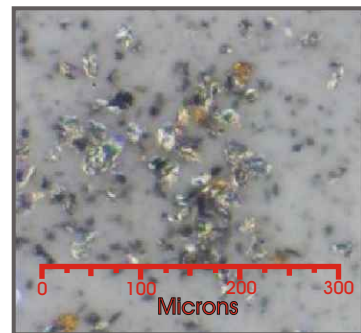
Often regarded as the single most important advanced test for oil analysis, there is no question that a wide array of historical and potential problems can quickly be determined by monitoring the number and size-distribution of wear particles and contaminants in a used oil sample.



An ISO Particle Count is an excellent diagnostic and predictive test for a wide range of equipment such as:

- Hydraulics
- Gearboxes
- Compressors
- Transmissions
- Turbines
- Bearings

A particle count can be an early indicator of an array of potential problems that may exist and so is often an essential part of a proactive extra testing program. Detailed scale photographs are available which can assist the maintenance expert in determining the nature and quantity of particulate matter within the system.



An ISO Particle count can provide:

- an excellent general indicator of component condition.
- a trigger for other advanced testing such as X-ray Fluorescence
- a powerful diagnostic tool for your maintenance program.
- an essential addition to your conventional sampling program.
- excellent return on your oil analysis investment.

Fluid cleanliness is critical to a lubricating system's success. When setting goals for keeping your industrial fluids clean, routine particle counting is a crucial step in achieving the cleanest fluid possible. The ISO (International Organization for Standardization) particle count determines size ranges and concentrations of solid particulate found in industrial fluids. Fluid Life reports the ISO Code cleanliness in the latest >4/6/14 micron format.

See also: Understanding ISO Particle Counts Recommended ISO Cleanliness Levels

The ISO Particle Count is an excellent tool for "flowchart diagnosis" of many maintenance problems. It can also be an indicator of when positive things are happening within a system such as successful corrective maintenance.

The ISO Particle Count can provide:

- Verification
- Identification
- Confirmation



Verifies	Identifies	Confirms
Filter Type Effectiveness	Atmospheric Contamination	Corrective Maintenance
Seal Performance	Engine Wear and Blowby	System Flushing
Bearing Condition	Failed machine repairs	Target Cleanliness Levels
Breather Condition	Need for Ferrography Test	Filter Cart Usage
Pump Condition	Defective Filtering Devices	Correct Drain Interval
Lubricant Storage Cleanliness	Abrasive Wear	Component Health

Maintenance Solutions

Once the maintenance technician has the testing information to determine if there is wear metals or contaminants within a component a course of action can be determined.

If these conditions exist the maintenance professional could:

- ✓ Increase frequency of oil change intervals.
- ✓ Modify the maintenance schedule based on the run time of the specific component.
- ✓ Pursue further testing based on results.

...because what happens on the inside really counts



9321 - 48 Street
Edmonton, AB T6B 2R4
Phone: (780) 462-2400
Fax: (780) 462-2420
Toll Free: 1-877-962-2400

95 Copernicus Blvd.
Brantford, Ontario N3P 1N4
Phone: (519) 720-9700
Fax: (519) 720-9705